



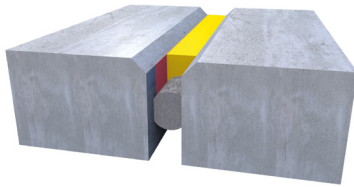
System solutions
for highly stressed joints in traffic areas




EUROLASTIC TC 30 G traffic

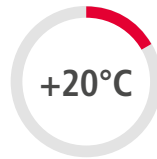
Approved, highly chemical and weatherproof 2-component polysulphide sealant with very fast curing

EUROLASTIC TC 30 traffic is a high-performance sealant that is approved by the DIBt (German Institute of Building Technology). This fast-acting polysulphide joint sealant is suitable for both renovation and new construction. Its 2-component system enables rapid application and short curing time, resulting in short blocking periods. The polysulphide sealant is the ideal sealant for special applications in road construction. It is also chemical-resistant, self-levelling, locally repairable and cold-vulcanising, enabling the interfaces in partial renovations or local repairs to bond quickly and permanently.

It also exhibits high resistance to UV, weathering and ageing. At temperatures below freezing, it retains its resilience and remains tack-free, even at high temperatures. Different primers for substrate pre-treatment and adhesion improvement ensure problem-free installation on diverse substrates.



-  Joint sealant: EUROLASTIC TC 30 G traffic
-  Primer: EUROLASTIC Primer U 12 G traffic or EUROLASTIC Primer S2
-  Backing material: Round PE cord (closed-cell)



+20°C



50%
relative humidity

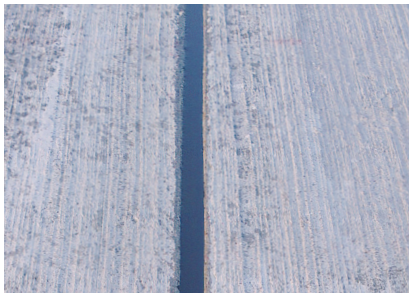


240
minutes

>> FULLY CURED AND TRAVERSABLE <<

SYSTEM FEATURES

- Chemical-resistant
- May be driven over by pneumatic and vulcanised tyres
- Approved total deformation 35%
- Outstanding cold resilience
- High notching resistance
- High UV and weathering resistance
- Tack-free, even at high temperatures
- High ageing resistance
- Very fast curing
- Complies with: ZTV Fug StB | DIN EN 14188-2
- National technical approval



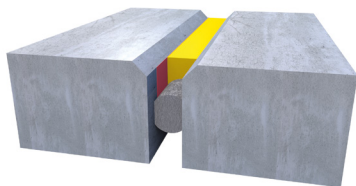
EUROLASTIC TC 20 G




Highly resilient polysulphide sealant with an approved total deformation of 35%



EUROLASTIC TC 20 G in black is a self-levelling 2-component polysulphide sealant for building component and connection joints in walkways and traffic areas. It has high chemical and weathering resistance, especially for warehouse and production areas, container terminals and haulage areas. The polysulphide sealant is suitable for the creation or renovation of horizontal floor

joints that must be mechanically stressed within a short time and do not fall into the category of storage, filling and handling facilities for water polluting substances. It has an approved total deformation of 35%. In combination with the appropriate primer, it adheres to diverse substrates such as concrete, stainless steel, cement screed, non-ferrous metals or PCC mortar.



-  Joint sealant: EUROLASTIC TC 20 G black
-  Primer: EUROLASTIC Primer U 12 G
-  Backing material: Round PE cord (closed-cell)



>> FULLY CURED AND TRAVERSABLE <<

SYSTEM FEATURES

- Chemical-resistant
- May be driven over by pneumatic and vulcanised tyres
- Approved total deformation 35%
- For mechanical application
- High notching resistance
- High UV and weathering resistance
- Outstanding cold resilience
- High ageing resistance
- Complies with: ZTV Fug StB | DIN EN 14188-2
- US specification SS-S 200E

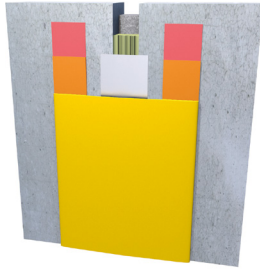


EUROTEK TK joint tape

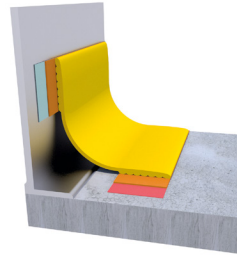
Weatherproof polysulphide joint tape

EUROTEK TK joint tape is an industrially produced joint tape. Using different tape widths (25 – 250 mm), the joint tapes are especially suitable for renovation of under or over-sized joints with above average overall movement. Due to their very high UV and weathering resistance,

the joint tapes have a very high long-term resistance of over 30 years. They comply with DIN EN 18540. The EUROTEK TK joint tape is mainly used for sealing concrete barriers.



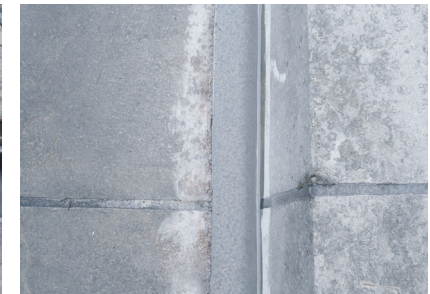
- Joint tape: EUROTEK TK joint tape
- Adhesive: to 140 mm width EUROLASTIC TK 51
from 160 mm width EUROLASTIC TC 30 S
- Primer: EUROLASTIC Primer U 12 G
- Separation tape: EUROTAPE (aluminium-laminated)
- Existing defective sealant



- Joint tape: EUROTEK TK joint tape
- Adhesive: to 140 mm width EUROLASTIC TK 51
from 160 mm width EUROLASTIC TC 30 S
- Primer: EUROLASTIC Primer U 12 G
- Primer: EUROLASTIC Primer ZM (2-component zinc dust primer)

SYSTEM FEATURES

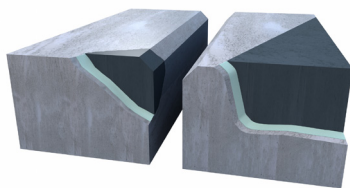
- Proven long-term resistance of over 30 years
- Complies with the specifications of IVD technical bulletin No. 4
- High UV and weathering resistance
- Above average movement absorption
- Tape widths from 25 – 250 mm
- Easy application
- Visually flawless joint appearance
- Outstanding cold elasticity to -50°C
- Complies with DIN EN 18540



EUROREPAIR PC 96

Resilient epoxy resin mortar for unreinforced concrete

EUROREPAIR PC 96 is a solvent-free epoxy resin mortar system for repair of damage in concrete surfaces. The mortar is especially intended for edge repair at joints and re-profiling. Due to its high compressive and flexural strength, EUROREPAIR PC 96 is ideal for use on highly stressed traffic areas.



- Mortar: EUROREPAIR PC 96
- Primer: EUROREPAIR HG 96

SYSTEM FEATURES

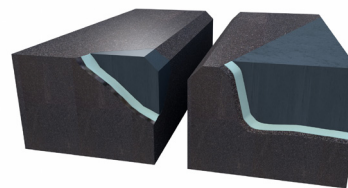
- May be driven over by pneumatic and vulcanised tyres
- Adjustable curing times
- Same modulus of elasticity as roadway concrete
- Very high compressive strength
- Easy application
- Water-impermeable
- MEB and TP-BEB RH-StB02 compliant



EUROREPAIR PC 96 AS

Premixed, pre-pigmented epoxy resin mortar for asphalt renovation

EUROREPAIR PC 96 AS is a solvent-free epoxy resin mortar system for repair of damage in asphalt surfaces. Due to its high compressive and flexural strength, EUROREPAIR PC 96 is ideal for use on highly stressed asphalt traffic areas.



- Mortar: EUROREPAIR PC 96 AS
- Primer: EUROREPAIR HG 96 AS

SYSTEM FEATURES

- May be driven over by pneumatic and vulcanised tyres
- Adjustable curing times
- Plasticised
- Easy application
- Water-impermeable

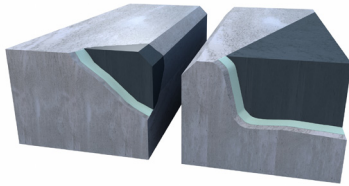


System solutions for highly stressed joints in traffic areas

EUROREPAIR PC 50

Resilient epoxy resin mortar for large areas of deep damage

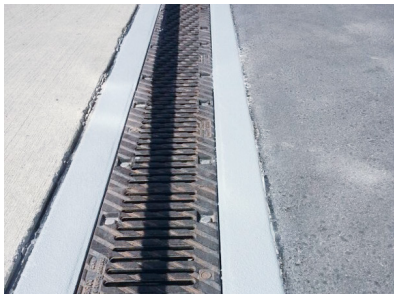
EUROREPAIR PC 50 is a solvent-free epoxy resin mortar system for repair of large areas of deep damage and edges of concrete traffic surfaces. Its three hardener speeds – normal, fast and super-fast – ensure problem free application, even at low temperatures. They ensure short blocking periods and rapid return of the renovated area to normal use.



- Mortar: EUROREPAIR PC 50
- Primer: EUROREPAIR HG 50

SYSTEM FEATURES

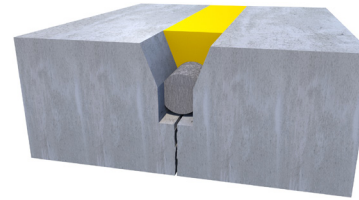
- May be driven over by pneumatic and vulcanised tyres
- Adjustable curing times
- Same modulus of elasticity as roadway concrete
- High compressive strength
- Easy application
- Water-impermeable
- TP-BEB RH-StB02 compliant



EURODUR EPH 0402 crackfit

Impact-resistant, chemical-resistant
2-component epoxy resin hybrid

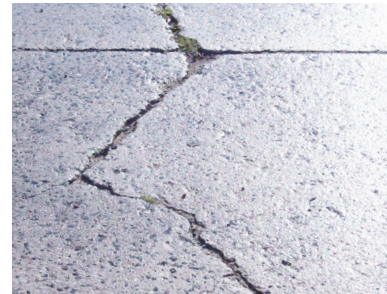
EURODUR EPH 0402 crackfit is a high-performance epoxy resin hybrid for the closure of mechanically stressed cracks and corner joints in concrete surfaces. The grout is also excellent for embedding sensor cables in walkways and traffic areas. The very short reaction time guarantees fast re-commissioning of the area.



- Grout: EURODUR EPH 0402 crackfit
- Backing material: Round PE cord (closed-cell)

SYSTEM FEATURES

- Chemical-resistant
- May be driven over by pneumatic and vulcanised tyres
- Tough-resilient
- Locally repairable
- High notching resistance
- Weatherproof
- Extremely impact-resistant
- Self-levelling



Core Capabilities



Areas subject to German Water Resources Act

Storage, filling and handling facilities for water-polluting substances Fuelling areas, de-icing areas, filling stations, refineries, tank farms, facilities for production, treatment and use of water-polluting substances



Wind power and agriculture

Areas for the storage and filling of liquid manure, manure, silage effluent, and solid dung, wind turbines, biogas plants, stable areas, horizontal silos



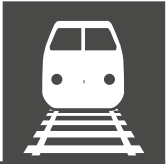
Traffic areas

Roads/ motorways, concrete barriers, parking garages, warehouse and logistics areas



Railway lines

trams, loading ramps



Air traffic areas

taxiways, runways, de-icing areas, fuelling areas



Industrial and trade areas

Storage areas, scrap yards, logistics areas, production areas, with areas used by forklifts



Parking areas

Parking garages, underground garages



Construction

Facades, balconies, joints, precast concrete apartment buildings





EUROTEAM Bauchemie GmbH
An der Mühle 1
D-15345 Altlandsberg
Tel.: +49 (0) 33438/1479-0
Fax: +49 (0) 33438/1479-29
info@euroteam-bauchemie.de